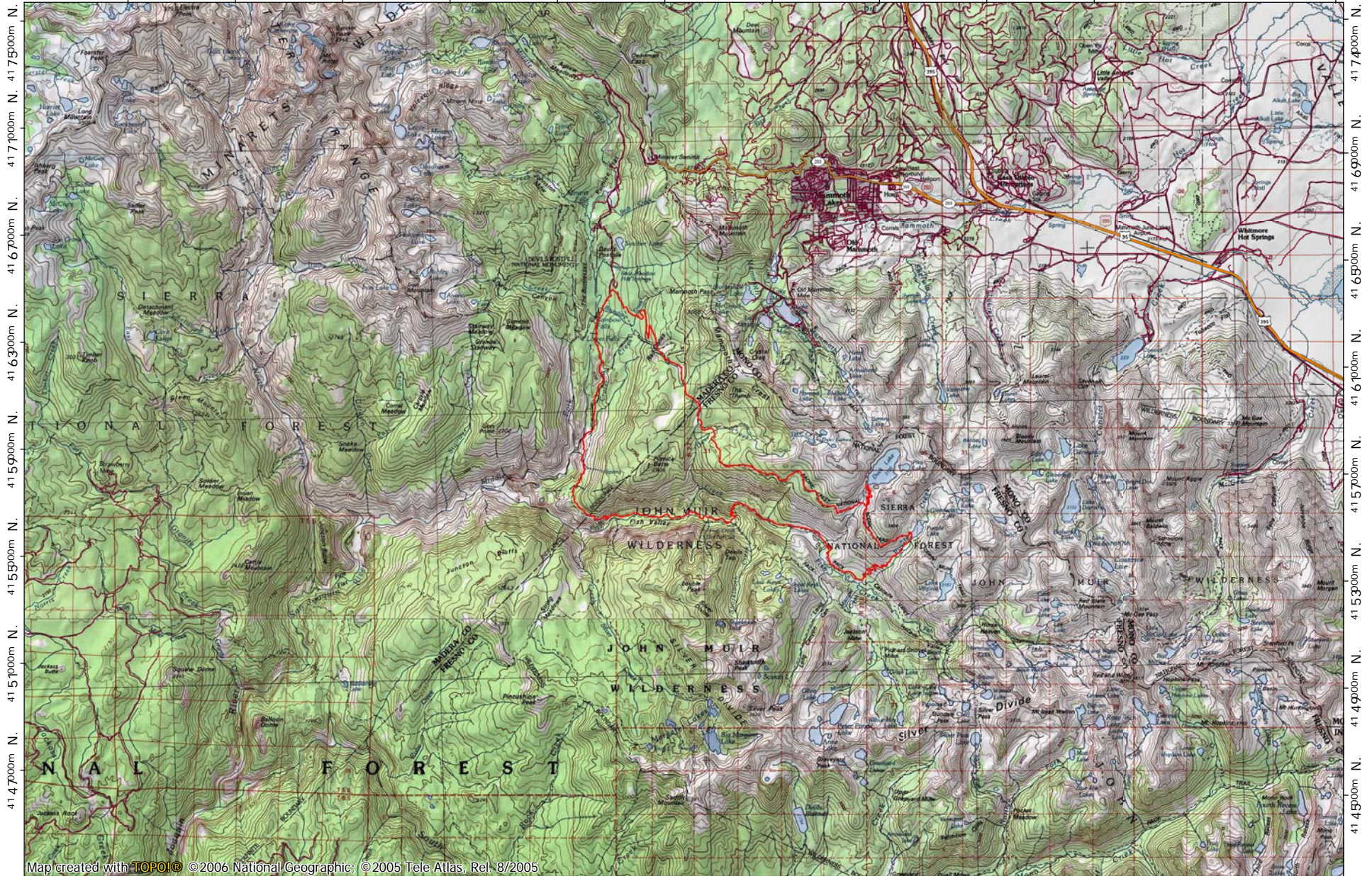


299000m E. 303000m E. 307000m E. 311000m E. 315000m E. 319000m E. 323000m E. 327000m E. 331000m E. 335000m E. NAD27 Zone 11S 344000m E.

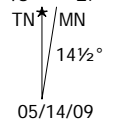
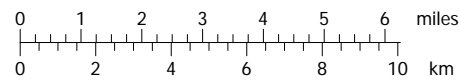


4175000m N.  
4171000m N.  
4167000m N.  
4163000m N.  
4159000m N.  
4155000m N.  
4151000m N.  
4147000m N.

4174000m N.  
4169000m N.  
4165000m N.  
4161000m N.  
4157000m N.  
4153000m N.  
4149000m N.  
4145000m N.

Map created with TOPO!® ©2006 National Geographic; ©2005 Tele Atlas, Rel. 8/2005

298000m E. 302000m E. 306000m E. 310000m E. 314000m E. 318000m E. 322000m E. 326000m E. 330000m E. 334000m E. 338000m E. 343000m E.



05/14/09